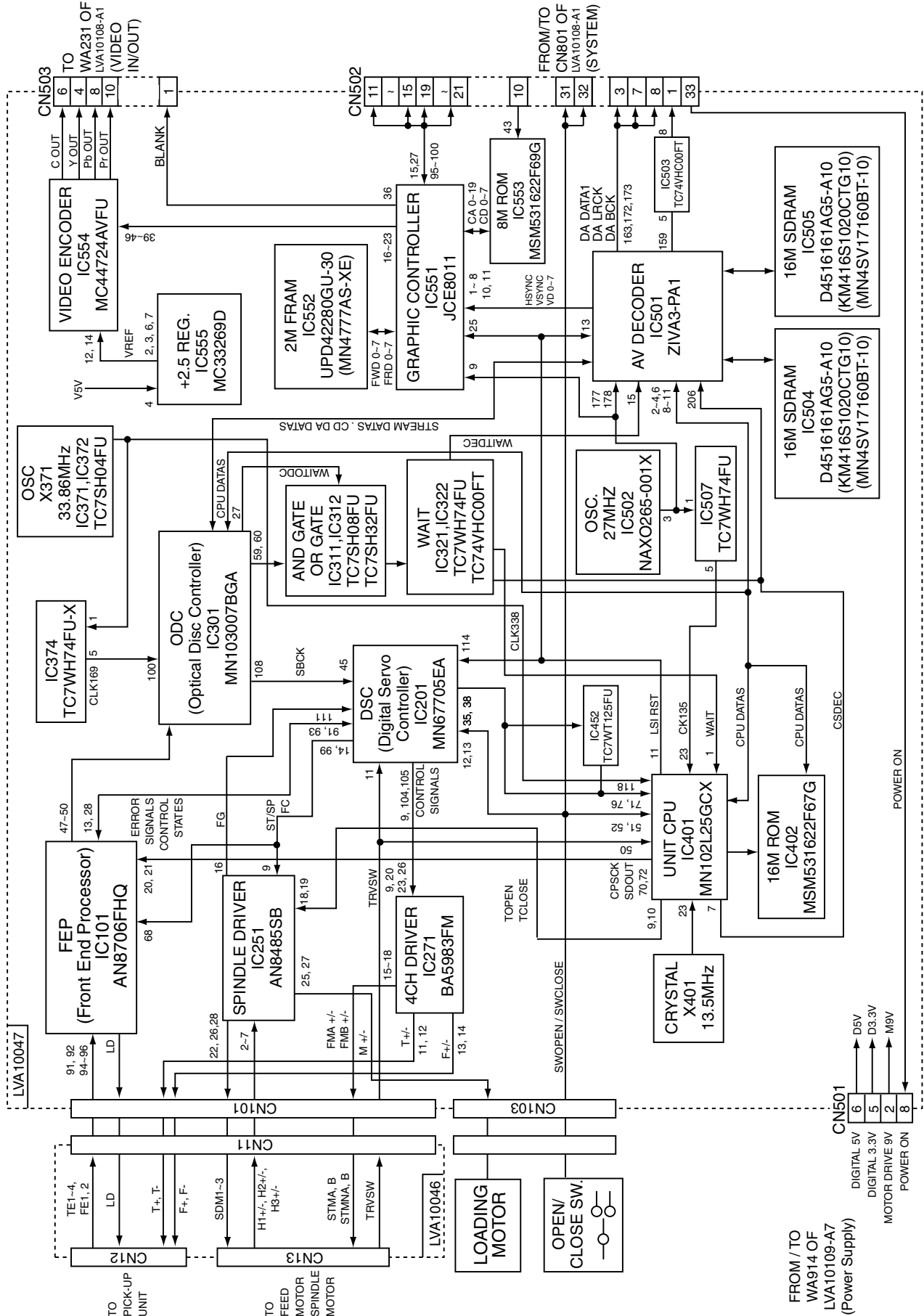
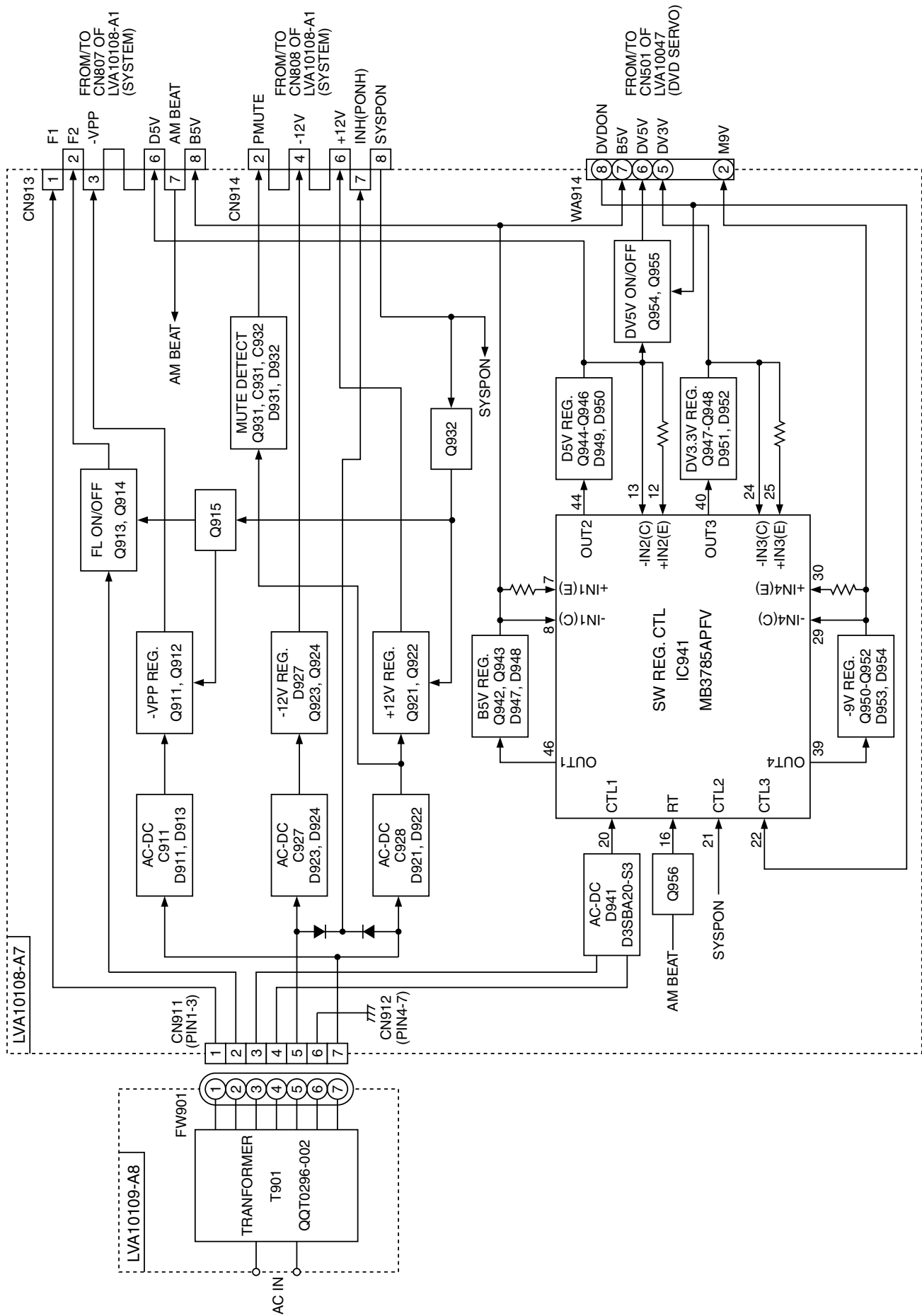


Block diagrams

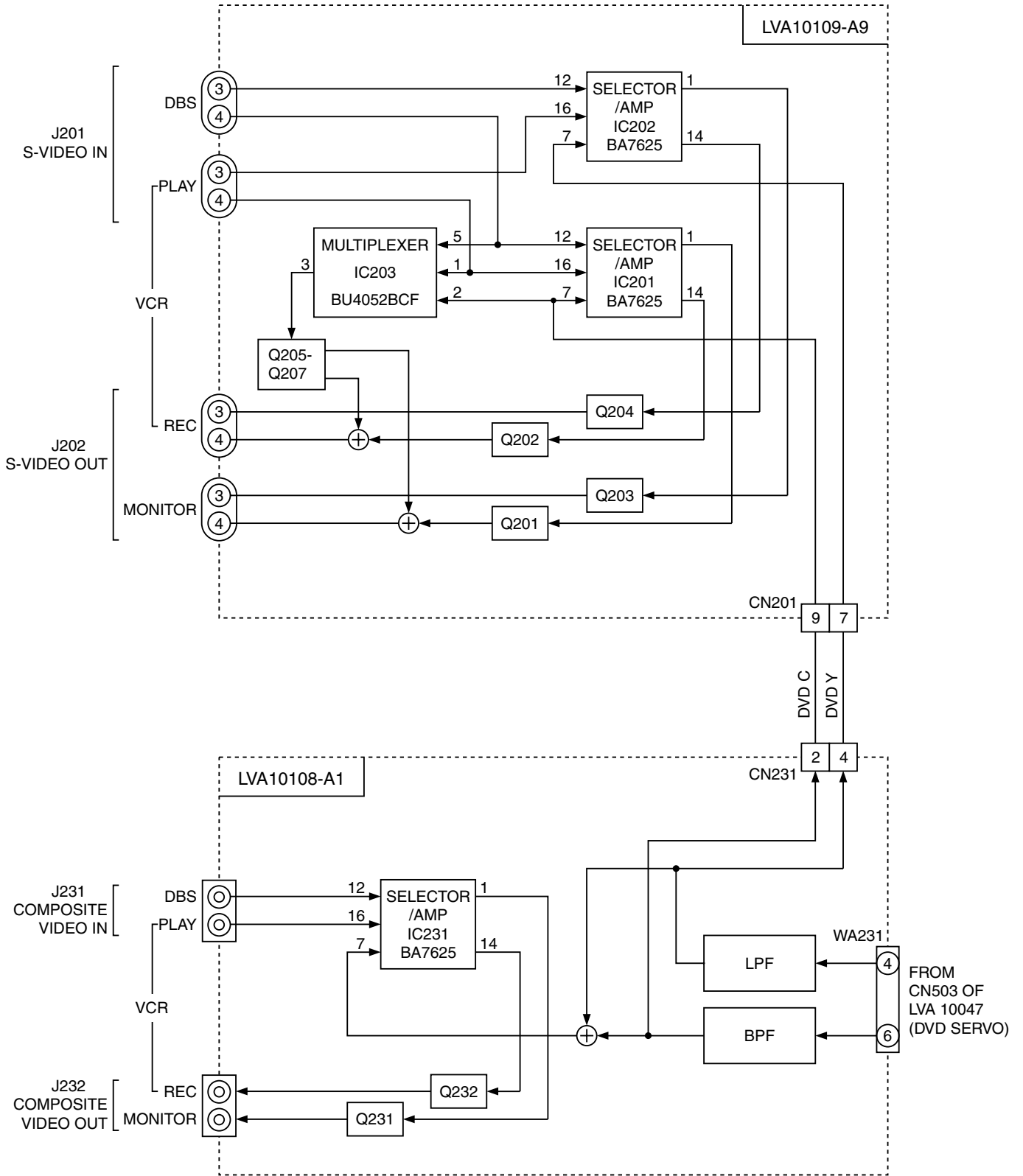
■ Block diagrams (DVD servo control Section)



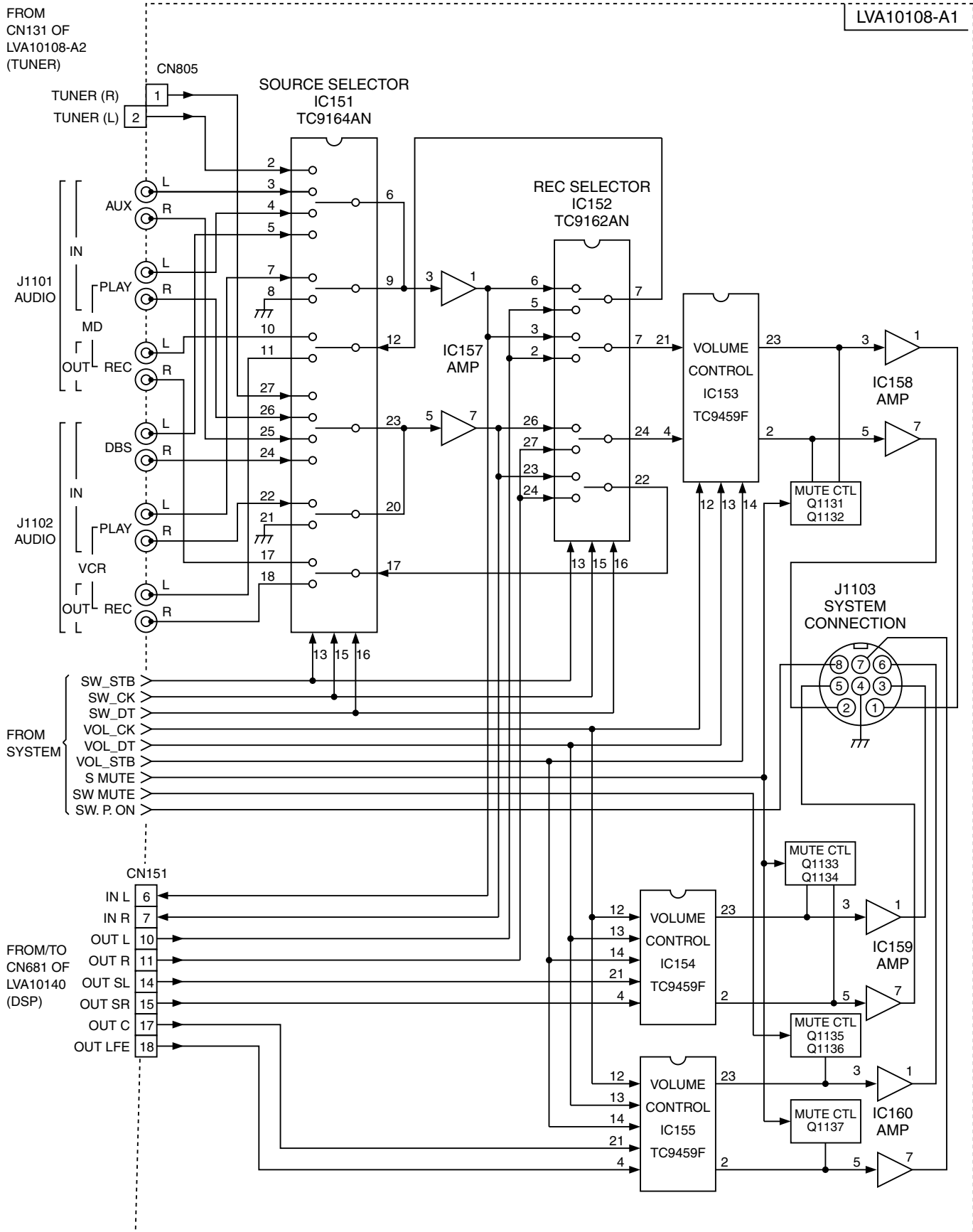
■ Block diagrams (Power supply Section)



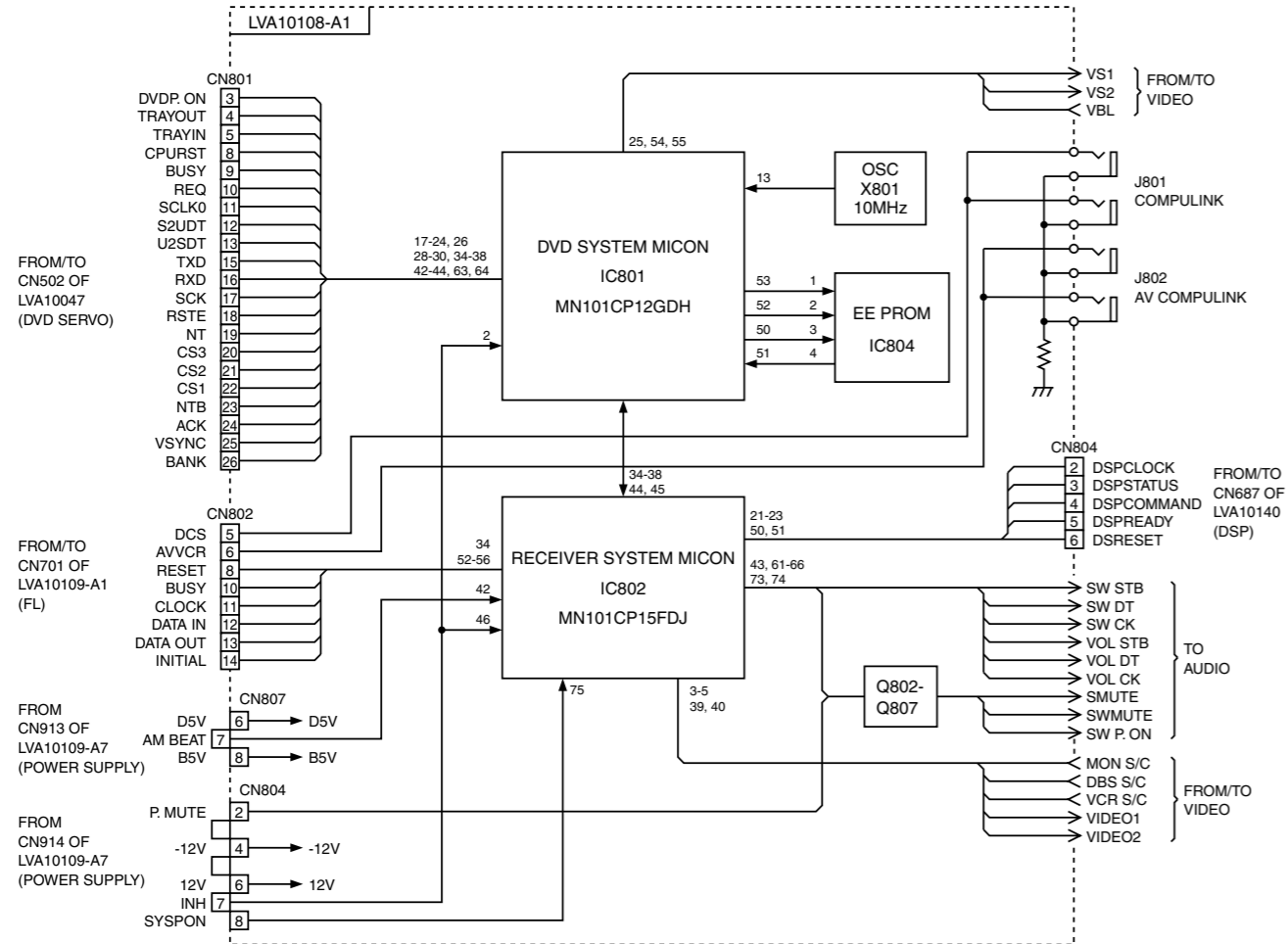
■ Block diagrams (Video out Section)



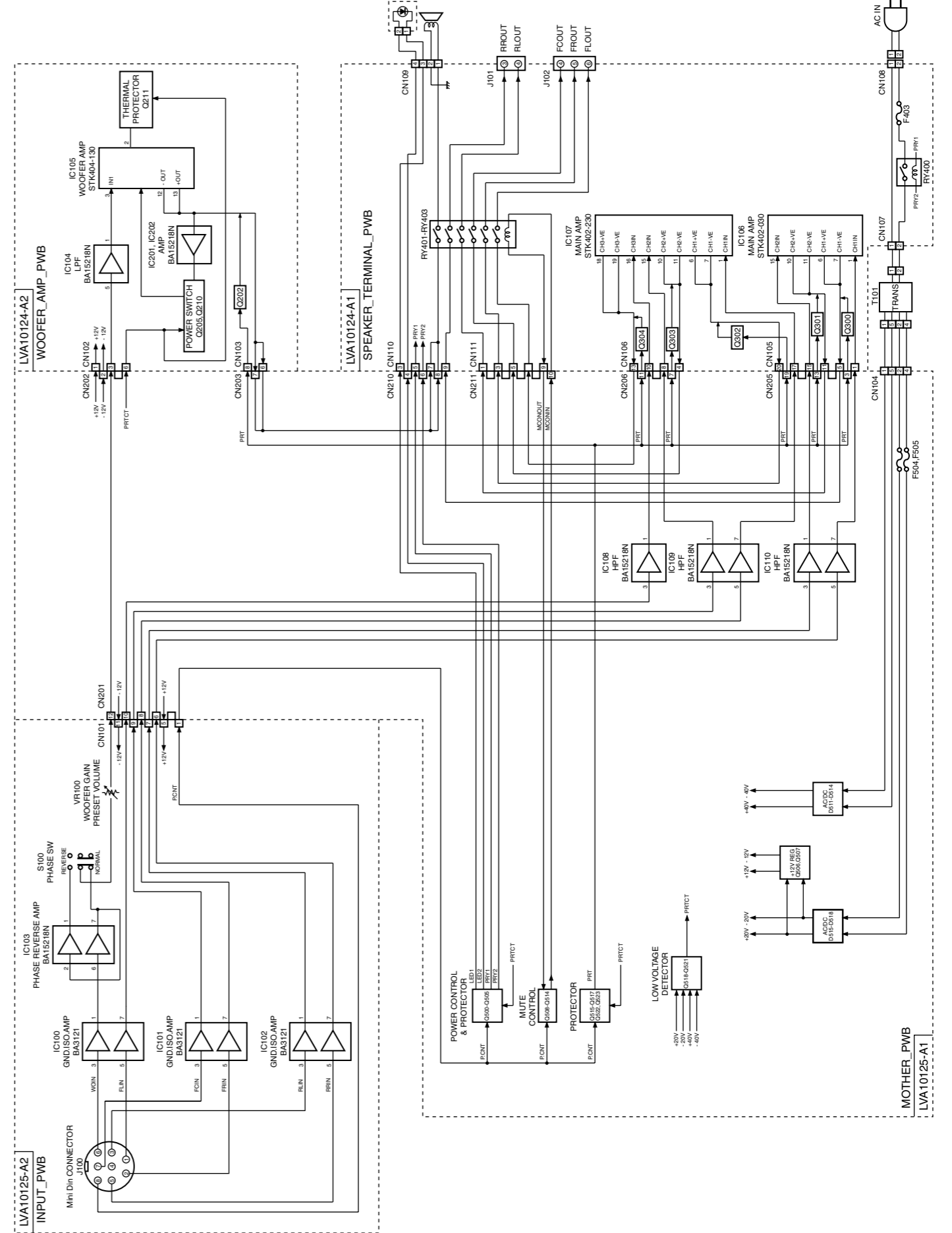
■ Block diagrams (Audio out section)



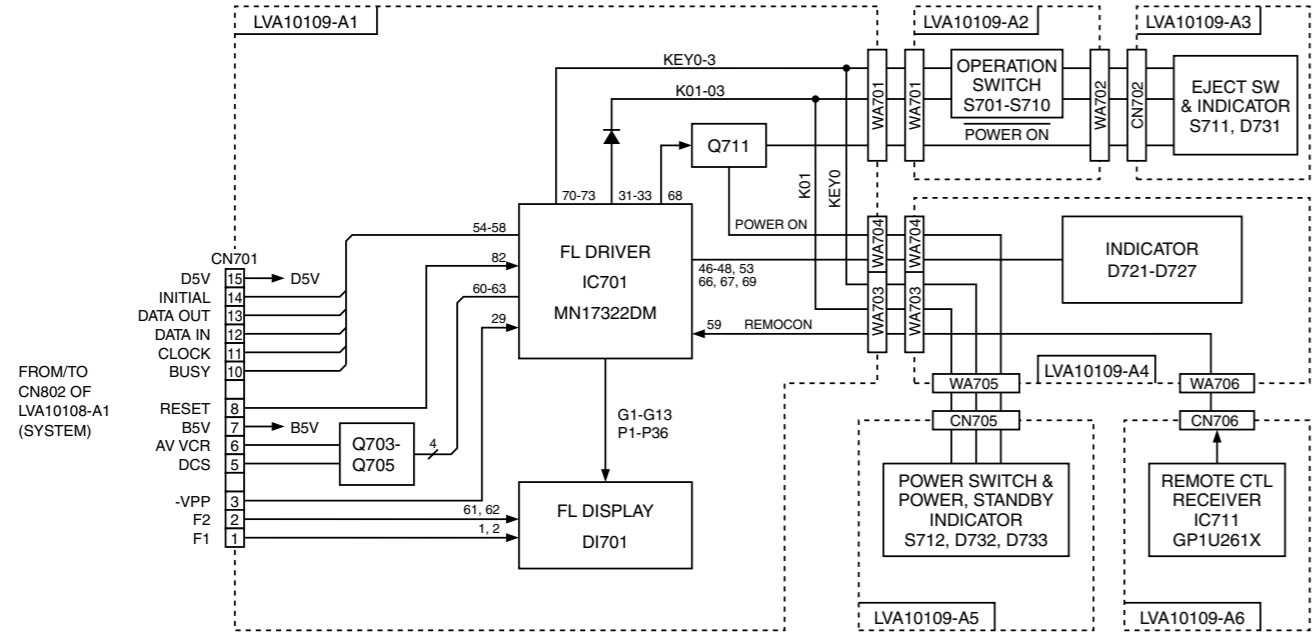
■ Block diagrams (System section)



■ Block diagrams (SP-PW10 Powered subwoofer section)



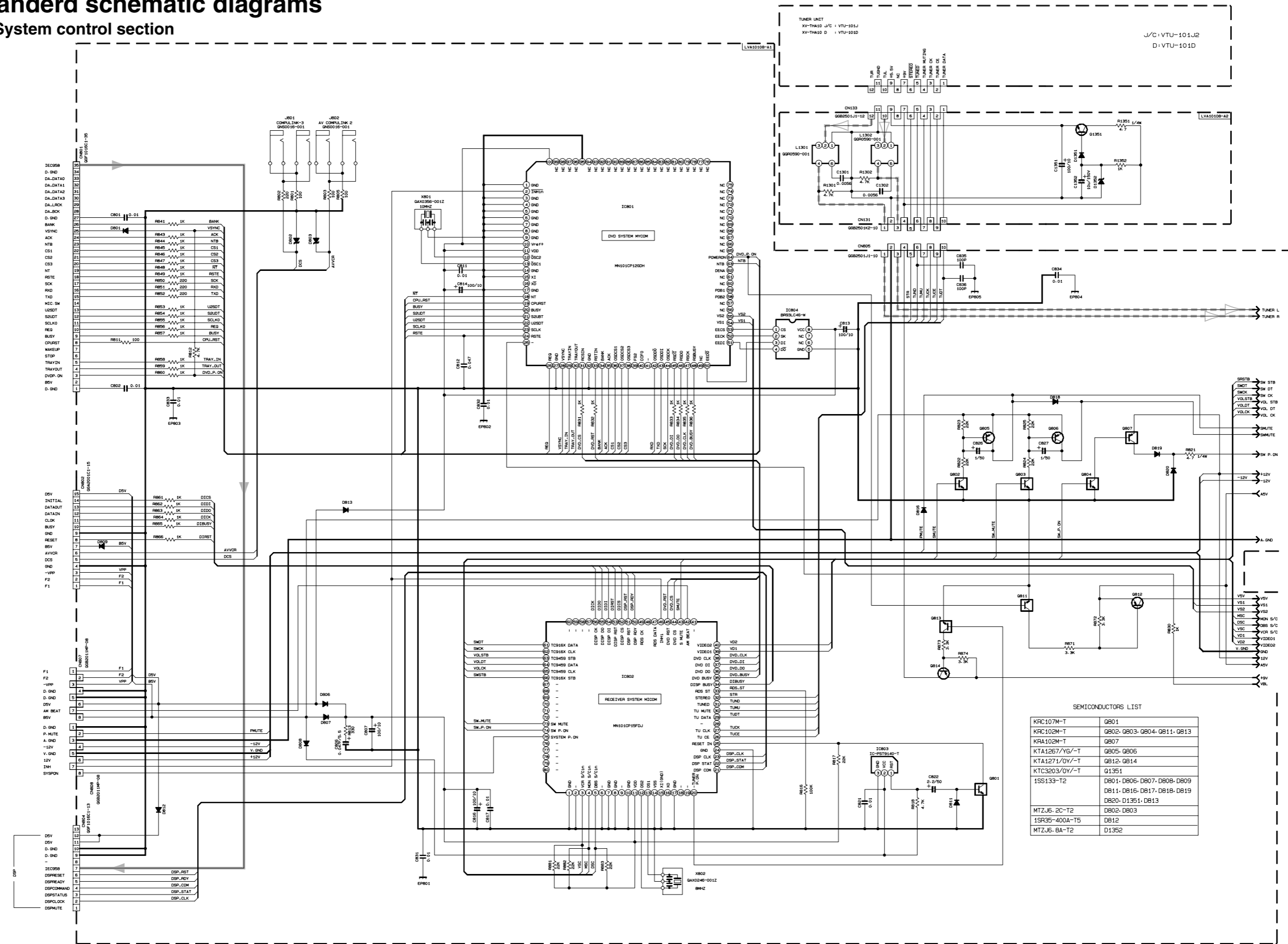
■ Block diagrams (FL section)



Standard schematic diagrams

System control section

7
6
5
4
3
2
1



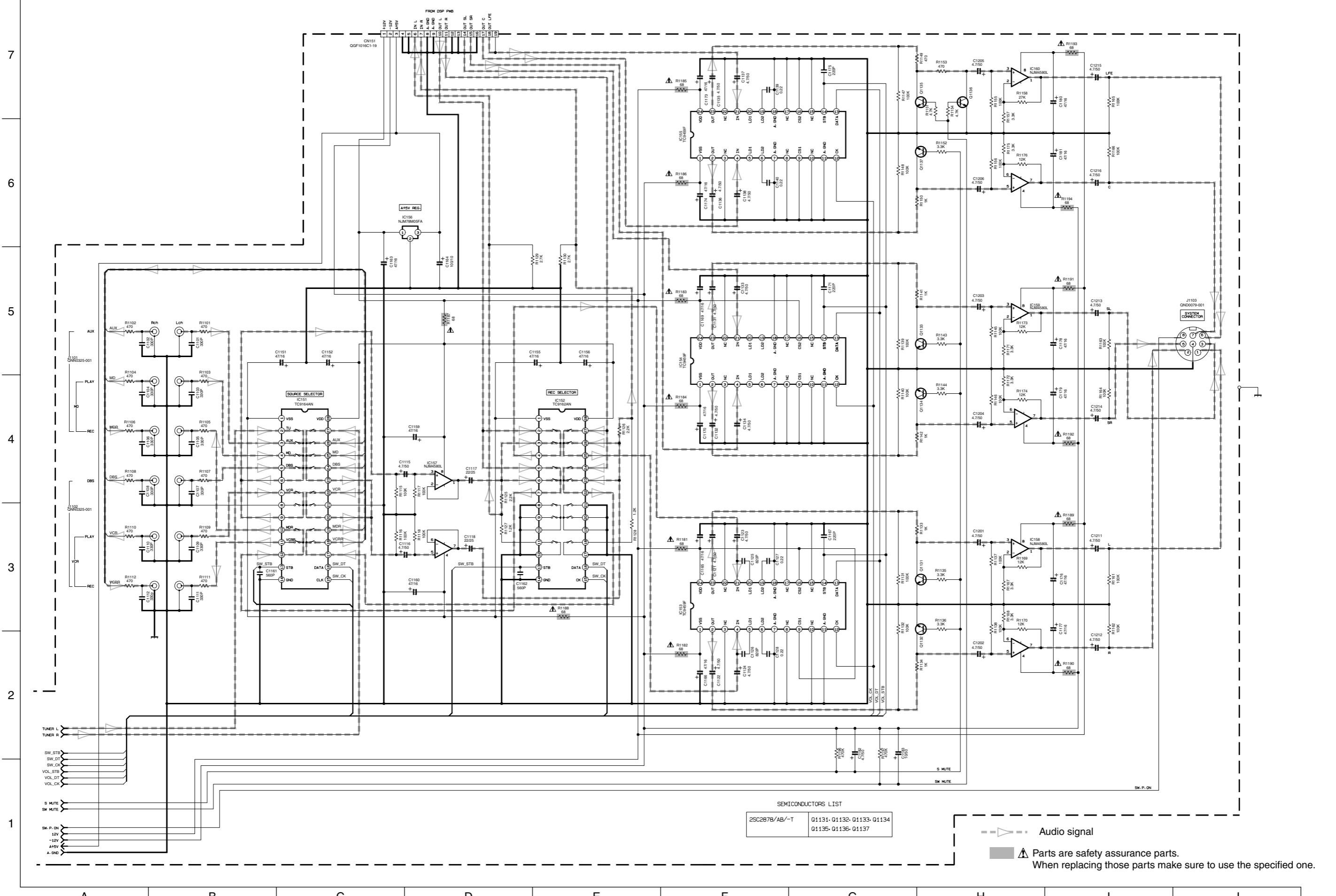
SEMICONDUCTORS LIST

KRC107M-T	Q801
KRC102M-T	Q802, Q803, Q804, Q811, Q813
KRA102M-T	Q807
KTA1267/YG/-T	Q805, Q806
KTA1271/OV/-T	Q812, Q814
KTC3203/OV/-T	Q1351
1S133-T2	DB01, DB06, DB07, DB08, DB09
	DB11, DB16, DB17, DB18, DB19
	DB20, D1351, D813
MTZJ6-2C-T2	DB02, DB03
1SR35-400A-T5	DB12
MTZJ6-8A-T2	D1352

Parts are safety assurance parts. Digital (Audio) signal Audio signal
 When replacing those parts make sure to use the specified one.

A B C D E F G H I J

■ Audio input/output section



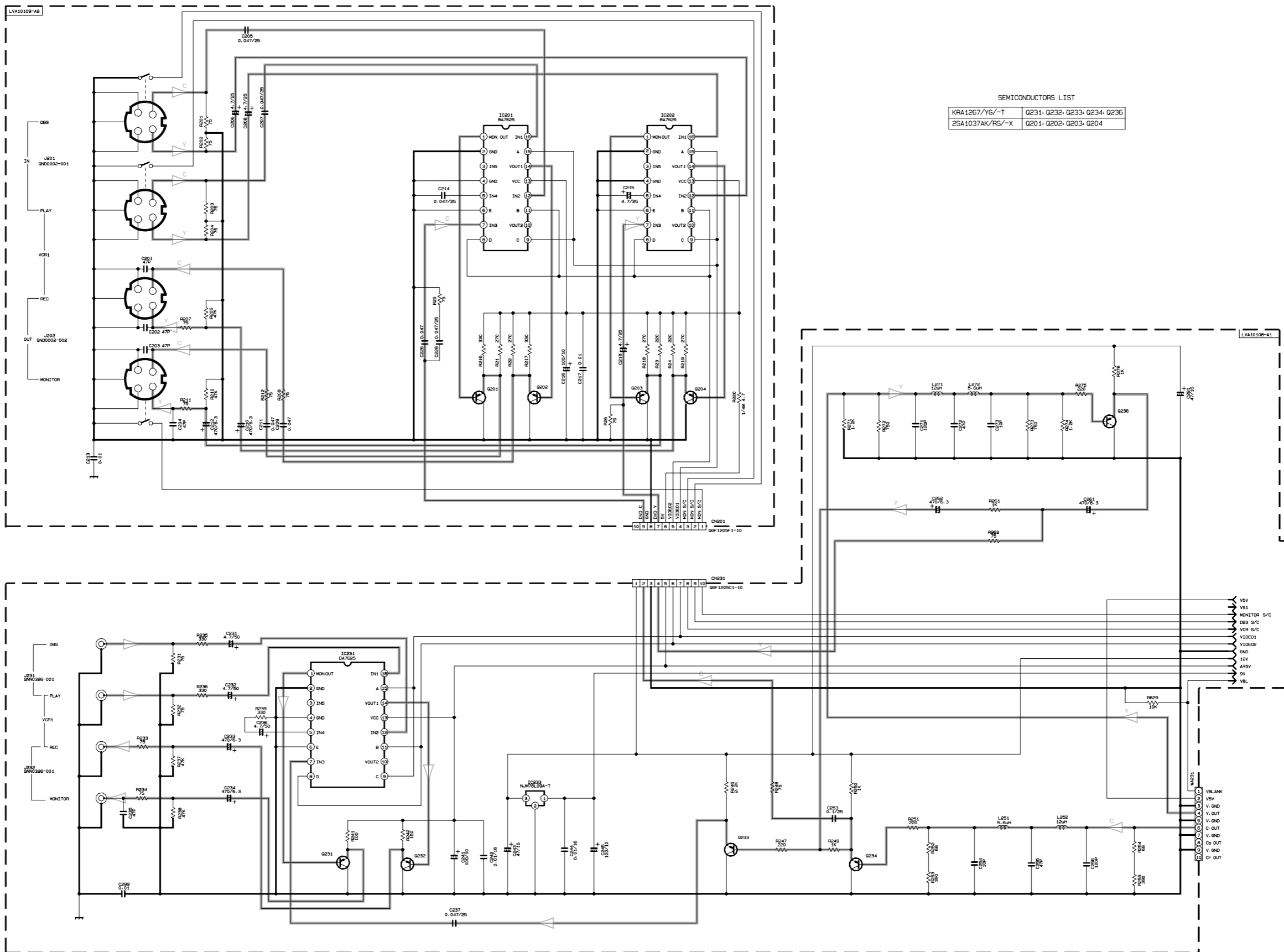
SEMICONDUCTORS LIST

25C287B/AB/-T	Q1131-Q1132-Q1133-Q1134
	Q1135-Q1136-Q1137

--- Audio signal
 ▲ Parts are safety assurance parts.
 When replacing those parts make sure to use the specified one.

Video input/output section

7
6
5
4
3
2
1



SEMICONDUCTORS LIST

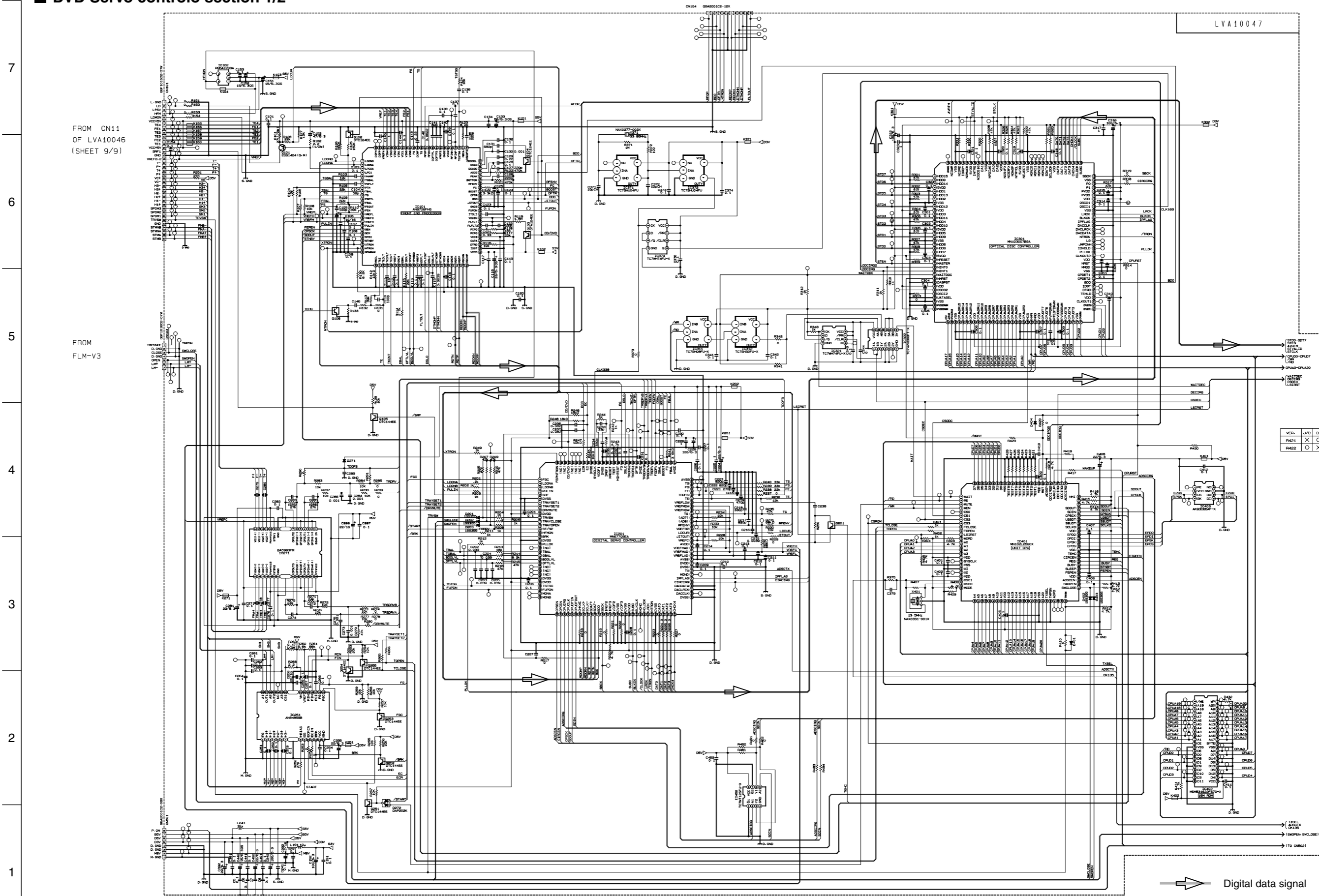
KRA1267/YG/-T	Q231, Q232, Q233, Q234, Q236
2SA1037AK/RS/-X	Q201, Q202, Q203, Q204

▲ Parts are safety assurance parts.
When replacing those parts make sure to use the specified one.

Video (Composite) signal
 Video (Luminance) signal
 Video (Color) signal

A B C D E F G H I J

DVD Servo controlo section 1/2



FROM CN11
OF LVA10046
(SHEET 9/9)

FROM
FLM-V3

LVA10047

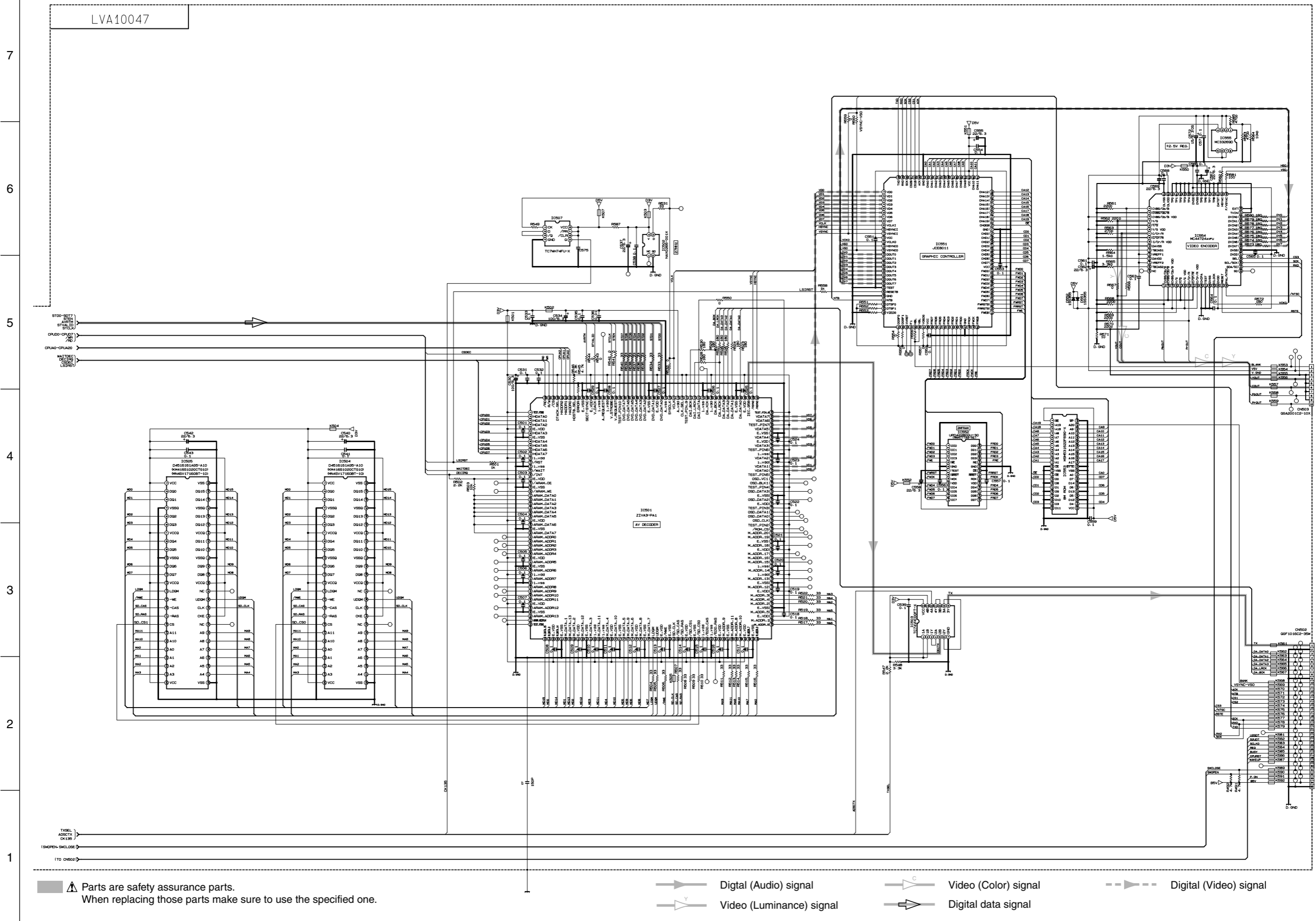
VER.	J/C	D
R421	X	○
R422	○	X

➡ Digital data signal

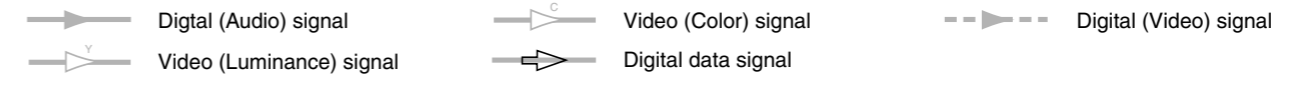
▲ Parts are safety assurance parts.
When replacing those parts make sure to use the specified one.

A B C D E F G H I J

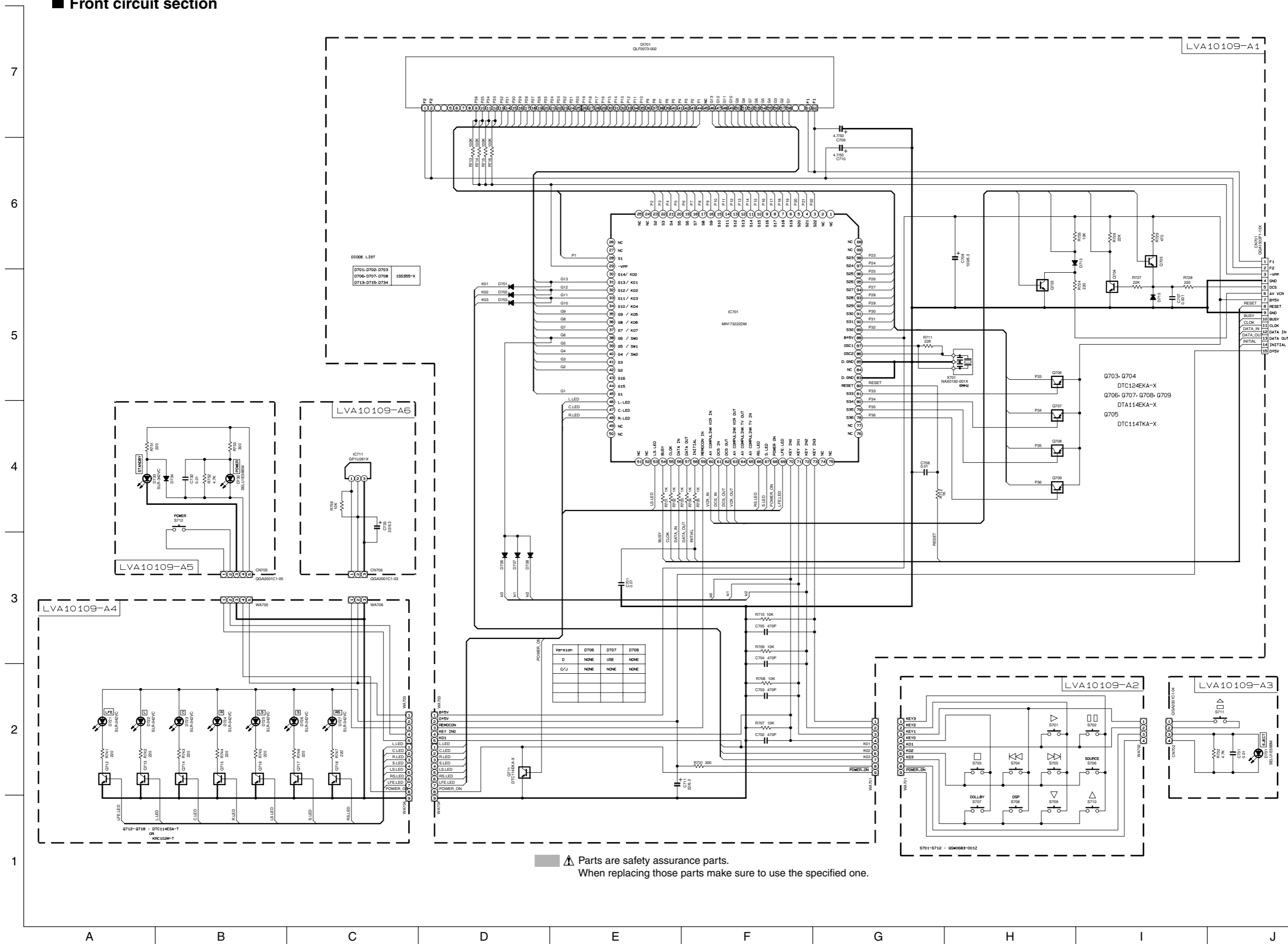
DVD Servo control section 2/2



Parts are safety assurance parts.
When replacing those parts make sure to use the specified one.



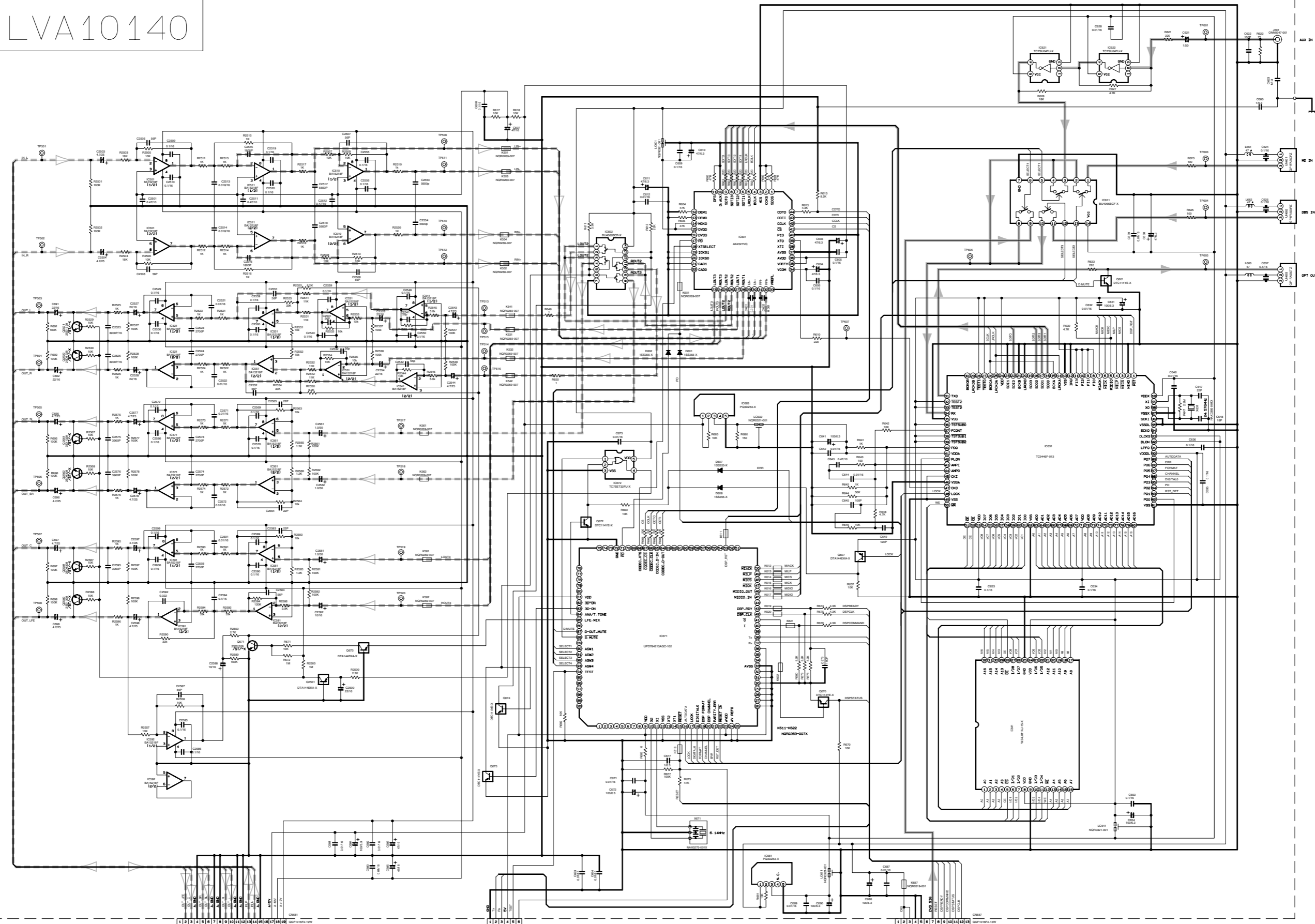
■ Front circuit section



DSP control section

LVA10140

7
6
5
4
3
2
1

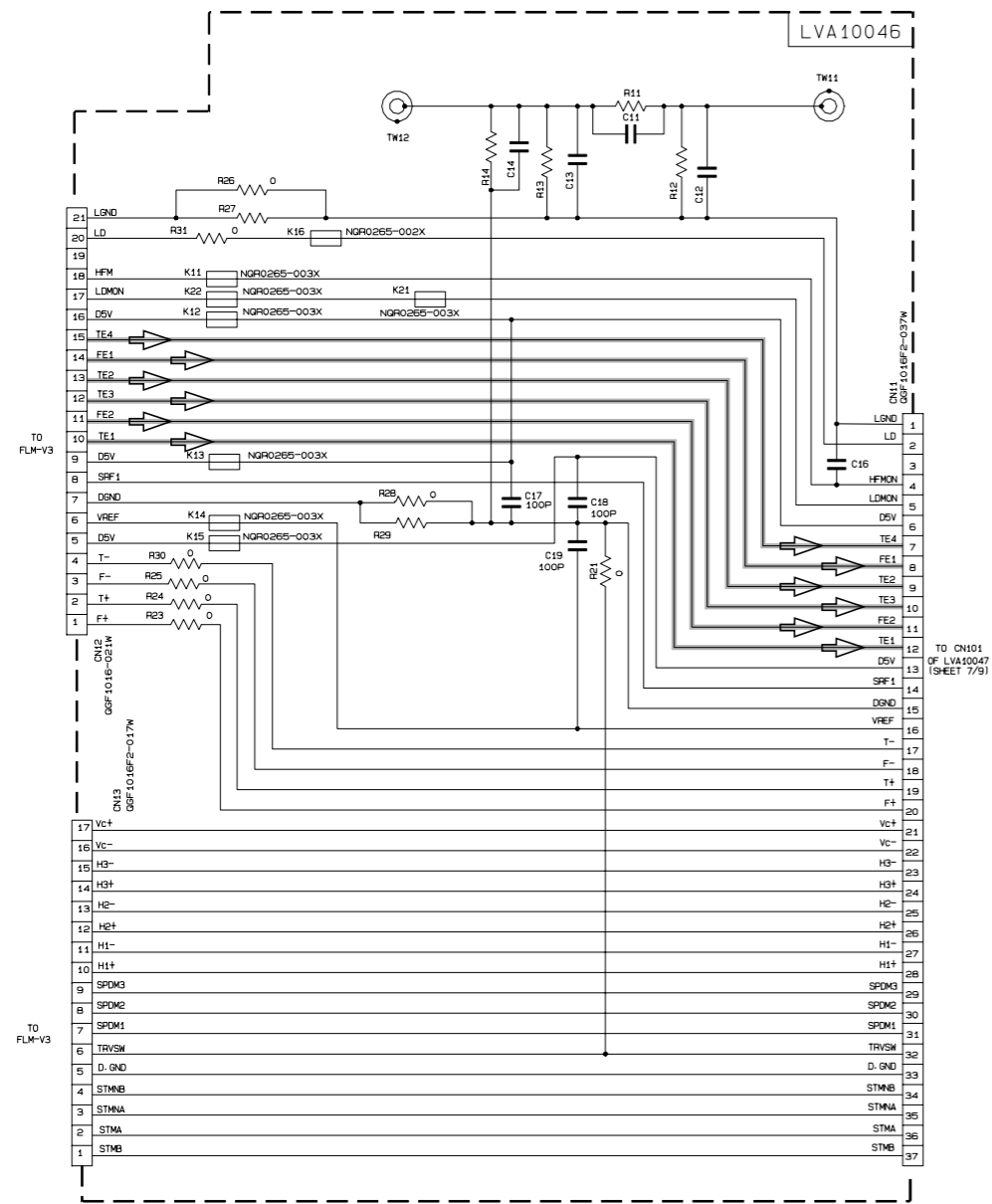


▲ Parts are safety assurance parts.
 When replacing those parts make sure to use the specified one.

— Digital (Audio) signal - - - Audio signal

A B C D E F G H I J

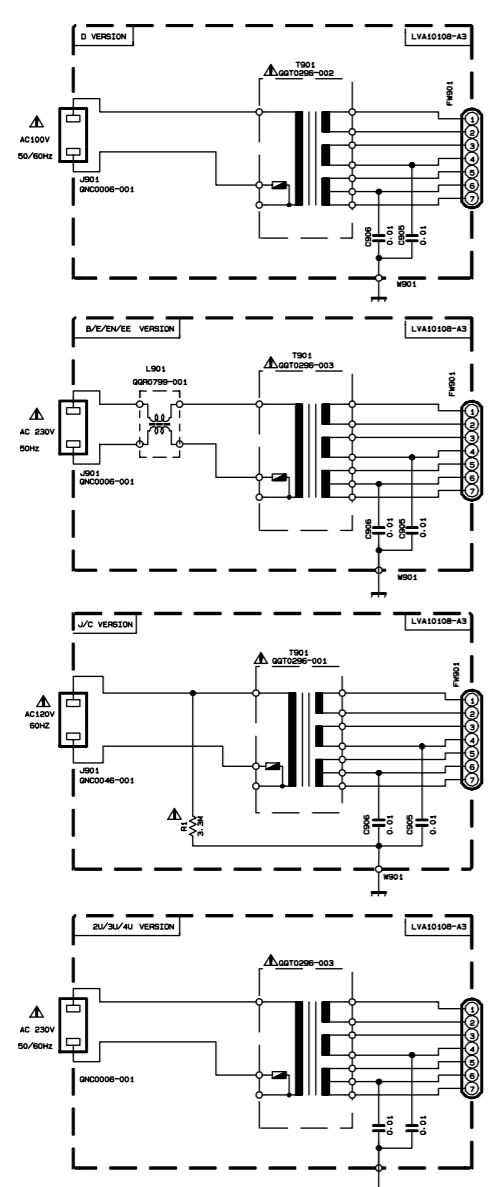
■ Connection circuit section



- Digital data signal
- Parts are safety assurance parts.
When replacing those parts make sure to use the specified one.

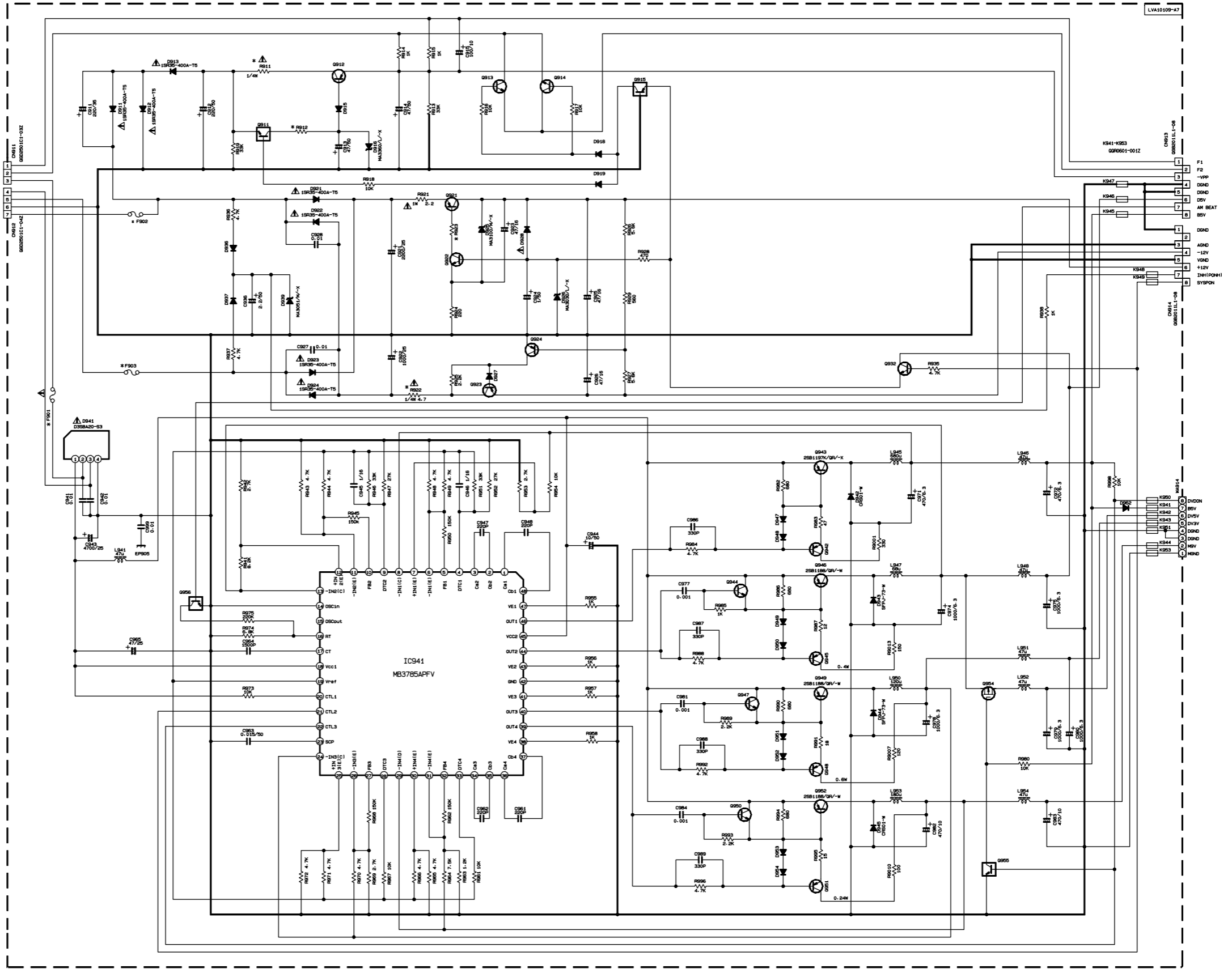
Power supply section

7
6
5
4
3
2
1



TRANSISTOR & DIODE LIST

Q911	KRC102M-T
Q955-Q956	DTC124EKA-X
Q915	DTA114EKA-X
Q912	2SB647/CD/-T
Q913-Q914	2SD2144S/VN/-T
Q921-Q923	2SB1566/EF/
Q924-Q942	2SA1037AK/RS/-X
Q945-Q948-Q951	2SC2412K/RS/-X
Q943	2SB1197K/QR/-X
Q946-Q949-Q952	2SB1188/QR/-W
D915-D918-D919-D927	1SS355-X
D936-D937-D947	
D948-D949-D950-D951-D952	
D953-D954-D962	
Q954	SI2305DS-X
D928	1SS388-X



VERSION	R922	F902-F903	F901	R923	R911	R912
D-C-J	UNF RESISTOR	BUS WIRE	2A/125V	680	4.7 UNF RESISTOR	1K
B-E-EN-EE-2U-3U-4U	FUSIBLE RESISTOR	T500mA	T2A	330	68 FUSIBLE RESISTOR	2.2K

A B C D E F G H I J

Voltage value section

7

6

5

4

3

2

1

IC101

NO	DC(V)	NO	DC(V)
1	0V	51	3.2V
2	0V	52	1.3V
3	4.4V	53	4.9V
4	0V	54	0V
5	1.6V	55	4.9V
6	1.6V	56	3.8V
7	1.8V	57	1.2V
8	2.1V	58	2.2V
9	1.6V	59	2.2V
10	1.4V	60	2.2V
11	0.6V	61	1.9V
12	1.4V	62	1.6V
13	1.4V	63	0V
14	1.4V	64	1.4V
15	0.6V	65	0.2V
16	1.4V	66	0.2V
17	2.1V	67	1.9V
18	4.6V	68	1.4V
19	5.0V	69	1.3V
20	4.9V	70	2.2V
21	4.9V	71	2.1V
22	4.9V	72	1.0V
23	3.2V	73	2.2V
24	4.9V	74	2.9V
25	0V	75	3.4V
26	1.2V	76	3.4V
27	1.4V	77	1.1V
28	1.4V	78	2.1V
29	1.4V	79	2.1V
30	0V	80	2.1V
31	2.1V	81	4.9V
32	0V	82	0V
33	1.4V	83	2.1V
34	1.2V	84	3.3V
35	1.5V	85	3.3V
36	1.6V	86	2.0V
37	1.9V	87	2.1V
38	2.1V	88	1.4V
39	3.9V	89	2.2V
40	3.8V	90	1.4V
41	2.1V	91	2.0V
42	2.3V	92	2.1V
43	2.3V	93	4.9V
44	4.9V	94	2.1V
45	0V	95	2.1V
46	0V	96	2.1V
47	1.6V	97	2.1V
48	1.6V	98	2.1V
49	1.6V	99	2.1V
50	1.6V	100	2.1V

IC102

NO	DC(V)
1	0V
2	5.0V
3	0V
4	0V
5	0V

IC201

NO	DC(V)	NO	DC(V)	NO	DC(V)
1	3.2V	51	0V	101	1.4V
2	0V	52	3.2V	102	1.4V
3	0V	53	3.2V	103	1.4V
4	0V	54	0V	104	1.3V
5	0V	55	1.5V	105	1.2V
6	0V	56	0V	106	3.2V
7	3.2V	57	3.2V	107	0.2V
8	3.2V	58	3.2V	108	0.1V
9	3.2V	59	0V	109	0.2V
10	3.2V	60	1.4V	110	1.6V
11	3.2V	61	1.6V	111	2.7V
12	4.2V	62	1.6V	112	0V
13	3.2V	63	1.6V	113	0V
14	3.2V	64	1.6V	114	4.9V
15	0V	65	0V	115	2.4V
16	3.2V	66	0V	116	0V
17	0V	67	0V	117	1.2V
18	0V	68	0V	118	1.9V
19	1.6V	69	3.2V	119	0V
20	1.6V	70	0V	120	1.6V
21	1.6V	71	1.4V	121	1.6V
22	2.0V	72	3.2V	122	0V
23	1.6V	73	0V	123	0V
24	1.6V	74	3.2V	124	0V
25	1.6V	75	0V	125	0V
26	1.6V	76	0.6V	126	0V
27	0V	77	1.4V	127	0V
28	3.2V	78	2.1V	128	3.2V
29	0V	79	3.2V		
30	1.6V	80	1.4V		
31	2.1V	81	1.9V		
32	0V	82	1.6V		
33	5.0V	83	1.4V		
34	5.0V	84	1.4V		
35	3.2V	85	1.4V		
36	5.0V	86	1.4V		
37	5.0V	87	1.4V		
38	0V	88	2.1V		
39	0V	89	1.4V		
40	1.6V	90	0.6V		
41	1.6V	91	1.4V		
42	1.6V	92	1.4V		
43	1.6V	93	1.4V		
44	0.2V	94	1.4V		
45	0V	95	1.4V		
46	0V	96	0V		
47	3.2V	97	3.2V		
48	0V	98	1.4V		
49	0V	99	1.7V		
50	0V	100	1.6V		

IC251

NO	DC(V)
1	0V
2	5.0V
3	5.0V
4	5.0V
5	5.0V
6	5.0V
7	5.0V
8	5.0V
9	0V
10	2.2V
11	2.2V
12	0V
13	5.0V
14	0V
15	0V
16	2.7V
17	1.4V
18	5.0V
19	5.8V
20	8.9V
21	9.3V
22	9.3V
23	0V
24	0V
25	0V
26	0V
27	0V
28	0V

IC271

NO	DC(V)
1	1.4V
2	1.4V
3	1.4V
4	1.4V
5	1.4V
6	1.4V
7	1.4V
8	0V
9	3.2V
10	5.0V
11	2.5V
12	2.5V
13	2.5V
14	2.5V
15	0V
16	0V
17	0V
18	0V
19	10.3V
20	0V
21	0V
22	0V
23	0V
24	0V
25	0V
26	0V
27	0V
28	10.3V

IC301

NO	DC(V)	NO	DC(V)	NO	DC(V)
1	5.0V	51	3.7V	101	1.6V
2	0V	52	3.6V	102	3.2V
3	5.0V	53	4.1V	103	0V
4	5.0V	54	1.2V	104	3.2V
5	0V	55	3.5V	105	3.2V
6	5.0V	56	0V	106	3.2V
7	5.0V	57	0.4V	107	0V
8	0V	58	5.0V	108	0V
9	5.0V	59	5.0V	109	3.2V
10	3.2V	60	4.6V	110	0V
11	5.0V	61	3.2V	111	1.9V
12	5.0V	62	2.7V	112	1.4V
13	5.0V	63	3.5V	113	1.7V
14	5.0V	64	4.0V	114	1.7V
15	5.0V	65	0V	115	1.4V
16	5.0V	66	3.2V	116	3.2V
17	5.0V	67	0V	117	3.2V
18	0V	68	1.9V	118	3.2V
19	0V	69	1.8V	119	0V
20	5.0V	70	1.4V	120	0V
21	0V	71	0V	121	0V
22	5.0V	72	2.0V	122	0V
23	5.0V	73	1.1V	123	0V
24	0V	74	0.9V	124	4.9V
25	5.0V	75	1.6V	125	5.0V
26	5.0V	76	3.2V	126	5.0V
27	5.0V	77	0V	127	0V
28	0V	78	3.2V	128	5.0V
29	0V	79	0V	129	5.0V
30	3.2V	80	0.2V	130	3.2V
31	3.2V	81	0V	131	2.5V
32	0V	82	0V	132	5.0V
33	0V	83	0V	133	0V
34	0V	84	0V	134	0V
35	0V	85	4.9V	135	5.0V
36	3.2V	86	3.2V	136	0V
37	0.1V	87	0V	137	0V
38	0.1V	88	0V	138	5.0V
39	0V	89	0V	139	5.0V
40	1.6V	90	0V	140	0V
41	4.6V	91	0V	141	2.8V
42	4.7V	92	3.2V	142	0V
43	1.5V	93	0V	143	5.0V
44	3.2V	94	3.2V	144	0V
45	3.9V	95	0V		
46	4.0V	96	3.2V		
47	0.7V	97	0V		
48	3.8V	98	3.2V		
49	1.1V	99	0V		
50	4.6V	100	1.6V		

IC311

NO	DC(V)
1	5.0V
2	4.6V
3	0V
4	4.7V
5	5.0V

IC371

NO	DC(V)
1	0V
2	1.5V
3	0V
4	1.4V
5	3.2V

IC401

NO	DC(V)	NO	DC(V)
1	5.0V	51	0.6V
2	5.0V	52	5.0V
3	5.0V	53	5.0V
4	5.0V	54	5.0V
5	0V	55	5.0V
6	5.0V	56	5.0V
7	5.0V	57	0V
8	4.4V	58	0V
9	0V	59	5.0V
10	0V	60	0V
11	4.9V	61	0V
12	5.0V	62	0V
13	0V	63	0V
14	0V	64	0V
15	0V	65	0V
16	0V	66	5.0V
17	5.0V	67	4.8V
18	2.3V	68	0V
19	0V	69	0V
20	0V	70	5.0V
21	5.0V	71	0V
22	5.0V	72	5.0V
23	2.4V	73	5.0V
24	2.4V	74	5.0V
25	5.0V	75	5.0V
26	0V	76	5.0V
27	0V	77	5.0V
28	0V	78	3.1V
29	0V	79	0V
30	0V	80	5.0V
31	0V	81	5.0V
32	0V	82	4.9V
33	0V	83	5.0V
34	5.0V	84	5.0V
35	1.5V	85	0V
36	4.7V	86	0V
37	0.1V	87	0V
38	0.1V	88	5.0V
39	0V	89	5.0V
40	0V	90	5.0V
41	0V	91	5.0V
42	0V	92	0V
43	0V	93	0.9V
44	0V	94	1.0V
45	0V	95	2.0V
46	0V	96	1.4V
47	0V	97	1.8V
48	0V	98	1.9V
49	0V	99	3.5V
50	5.0V	100	2.7V

IC402

NO	DC(V)
1	5.0V
2	0V
3	3.9V
4	1.5V
5	3.0V
6	2.7V
7	2.2V
8	2.2V
9	2.4V
10	2.5V
11	2.4V
12	0.7V
13	0V
14	2.0V
15	1.7V
16	0V
17	0.7V
18	0V
19	2.0V
20	0V
21	0V
22	0V
23	5.0V
24	2.0V
25	0V
26	2.4V
27	0V
28	2.9V
29	0V
30	2.7V
31	2.2V
32	0V
33	0V
34	0V
35	3.4V
36	0.7V
37	0.7V
38	4.4V
39	1.1V
40	4.0V
41	3.4V
42	3.6V
43	0V
44	0V

IC403

NO	DC(V)
1	4.9V
2	5.0V
3	0V
4	1.5V
5	0V
6	1.0V
7	0V
8	0V

IC452

NO	DC(V)
1	0V
2	3.2V
3	0V
4	0V
5	5.0V
6	5.0V
7	0V
8	5.0V

IC312

NO	DC(V)
1	5.0V
2	4.7V
3	0V
4	5.0V
5	5.0V

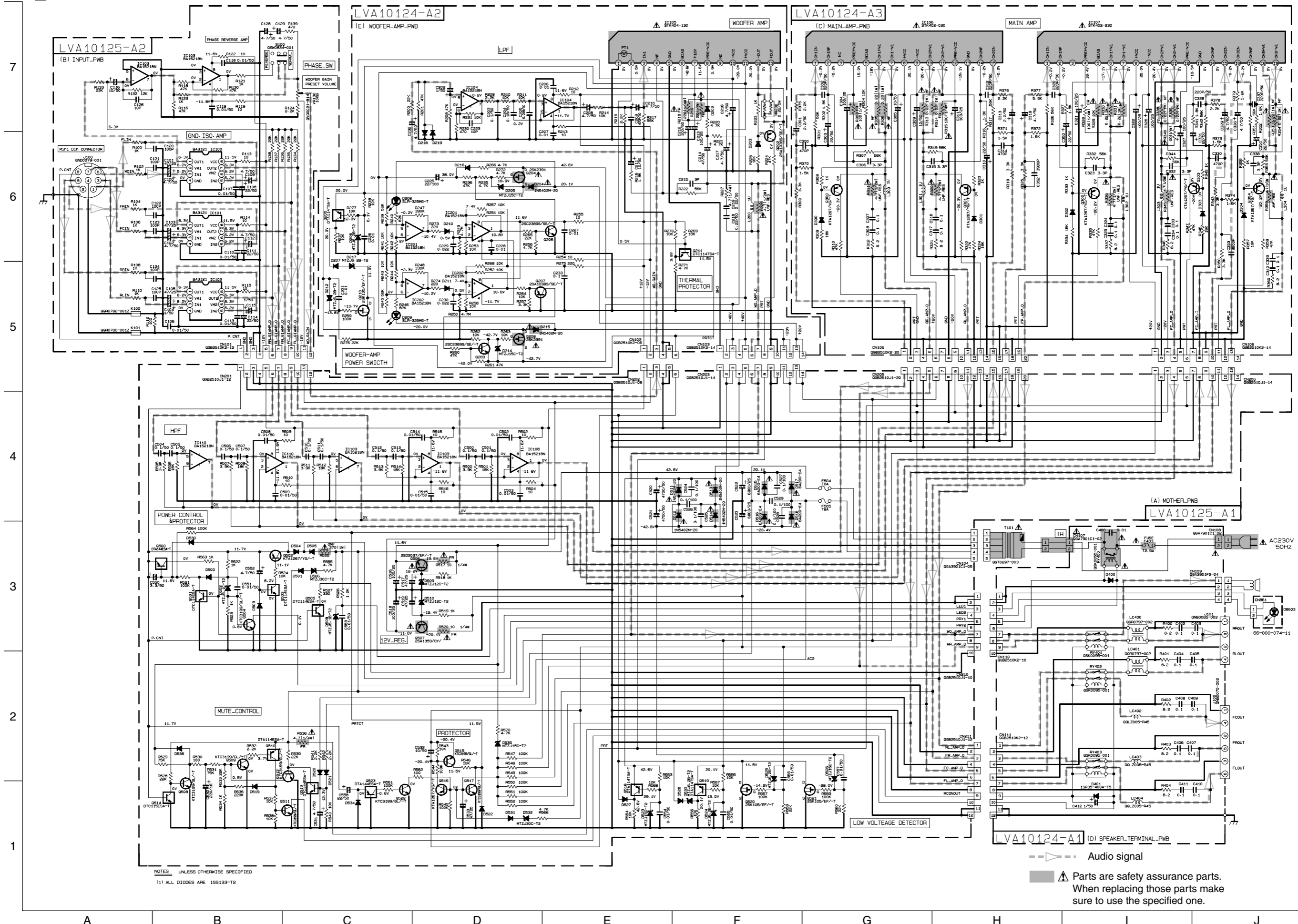
IC372

NO	DC(V)
1	0V
2	1.4V
3	0V
4	1.6V
5	3.2V

IC321

NO	DC(V)
1	5.0V

Powered subwoofer section



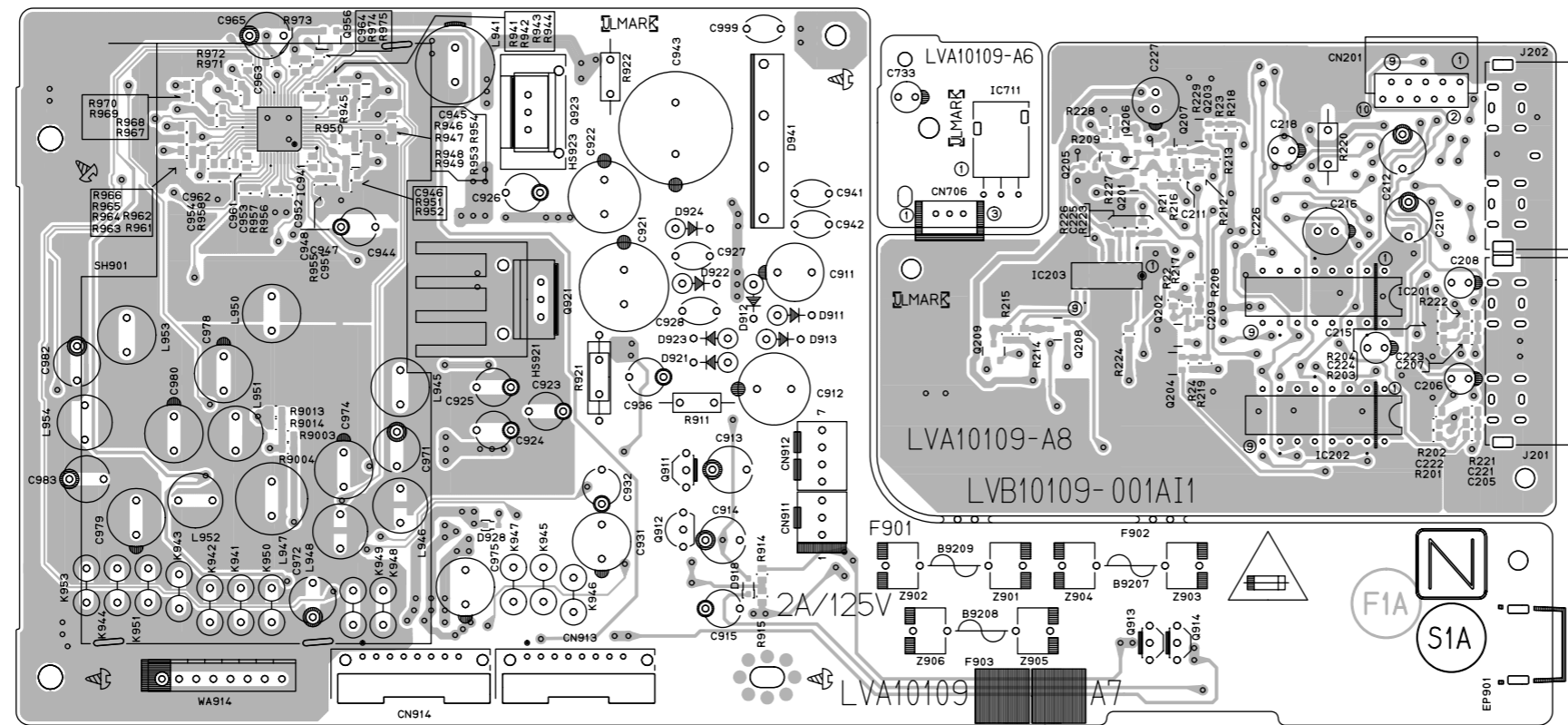
NOTES: UNLESS OTHERWISE SPECIFIED
 (1) ALL DIODES ARE 1S8133-T2

---> Audio signal
 ⚠ Parts are safety assurance parts. When replacing those parts make sure to use the specified one.

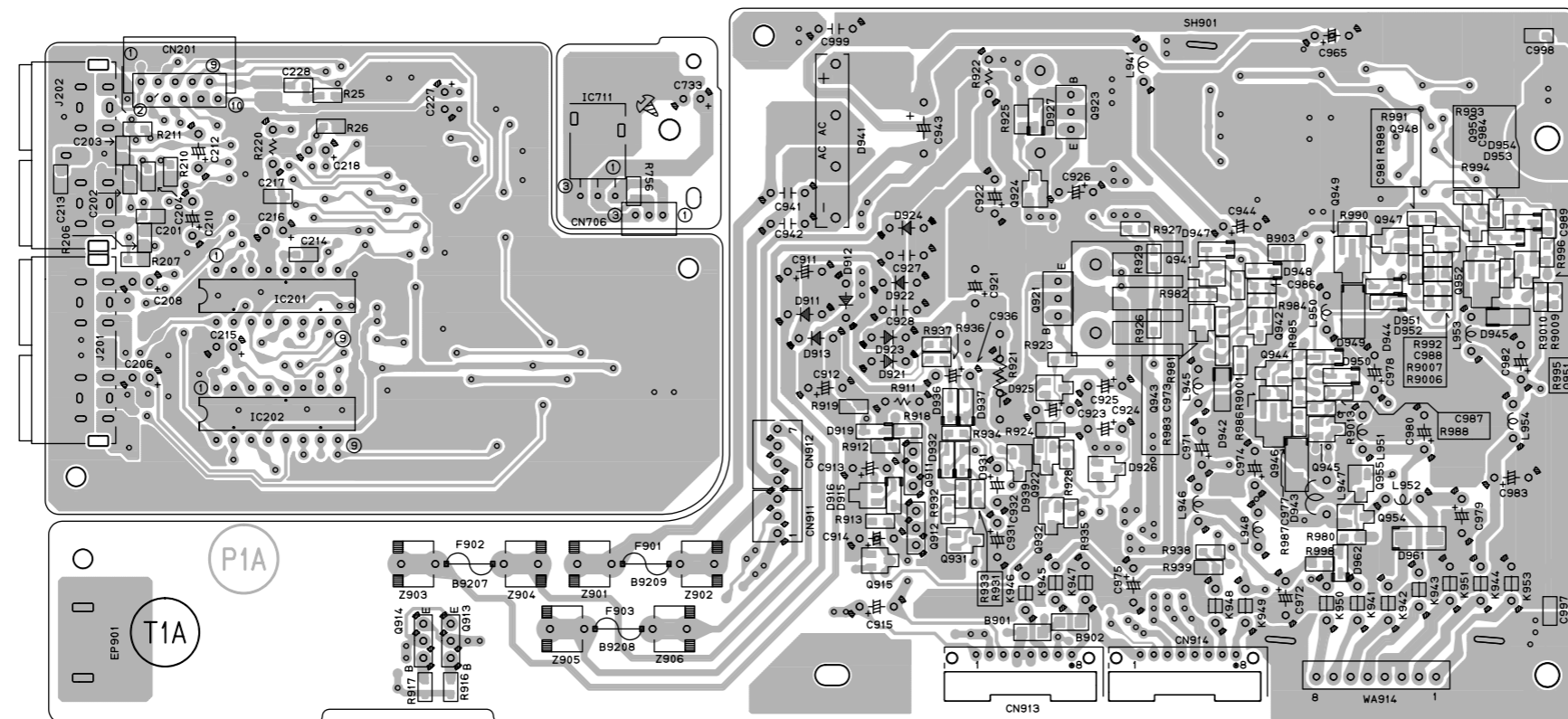
Printed circuit boards

Power supply board

(Surface side view)

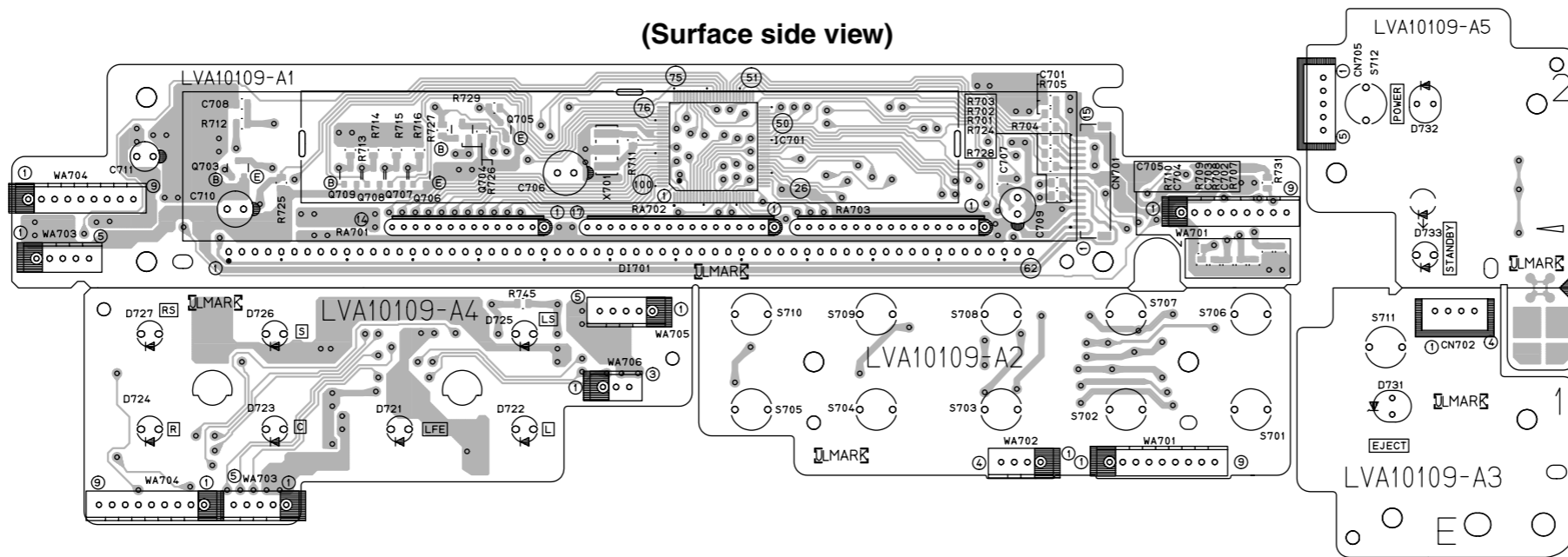


(Bottom side view)

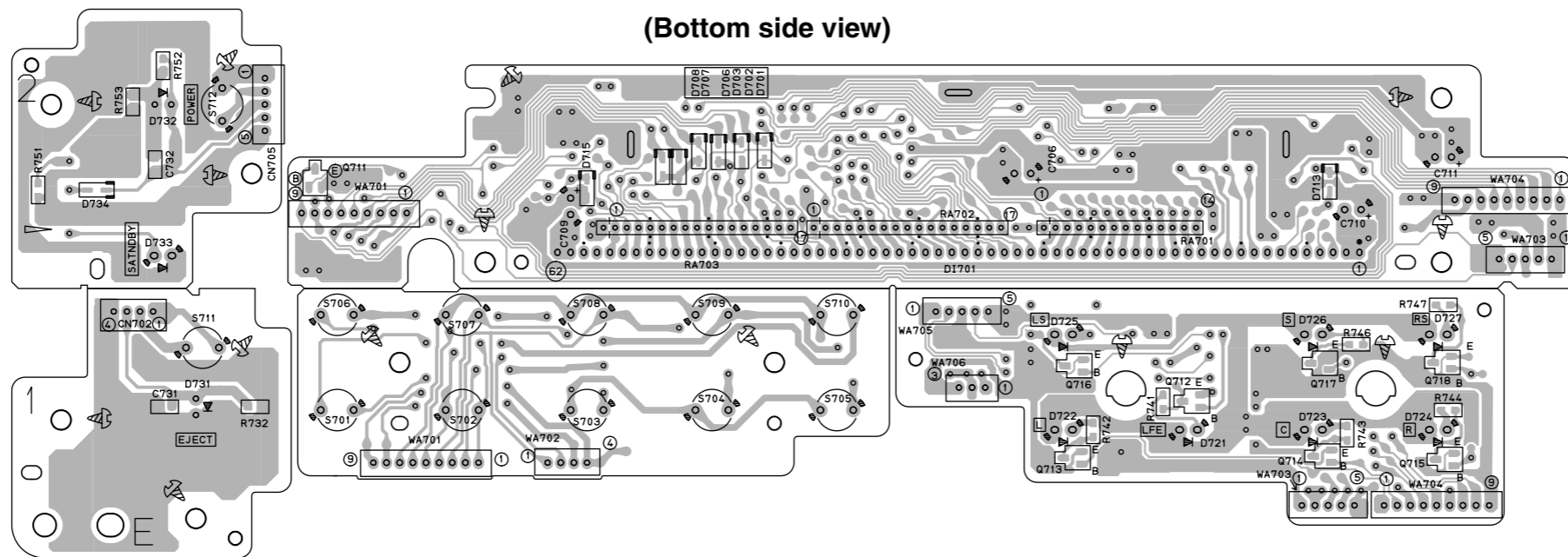


■ Front panel board

(Surface side view)



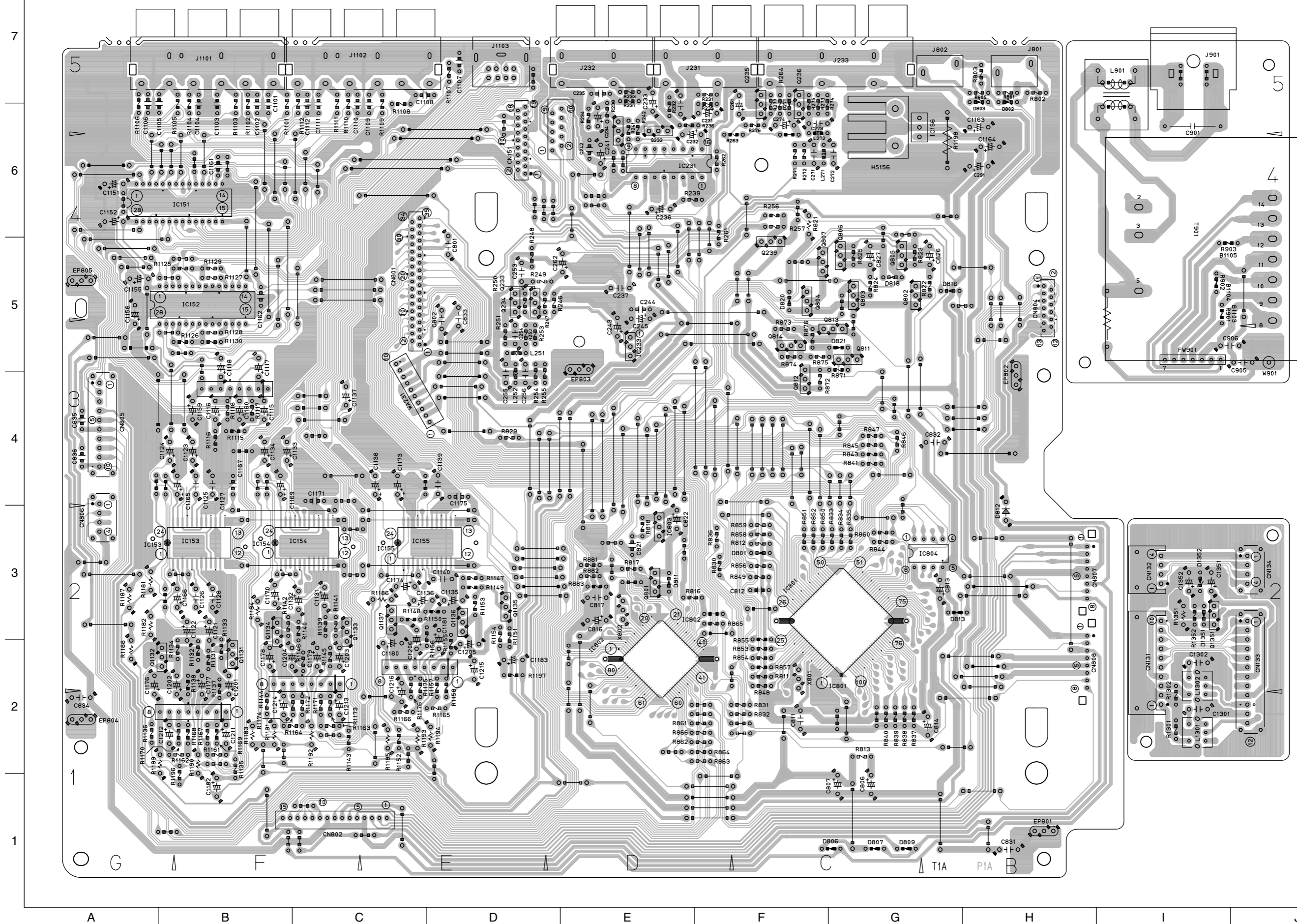
(Bottom side view)



7
6
5
4
3
2
1

A B C D E F G H I J

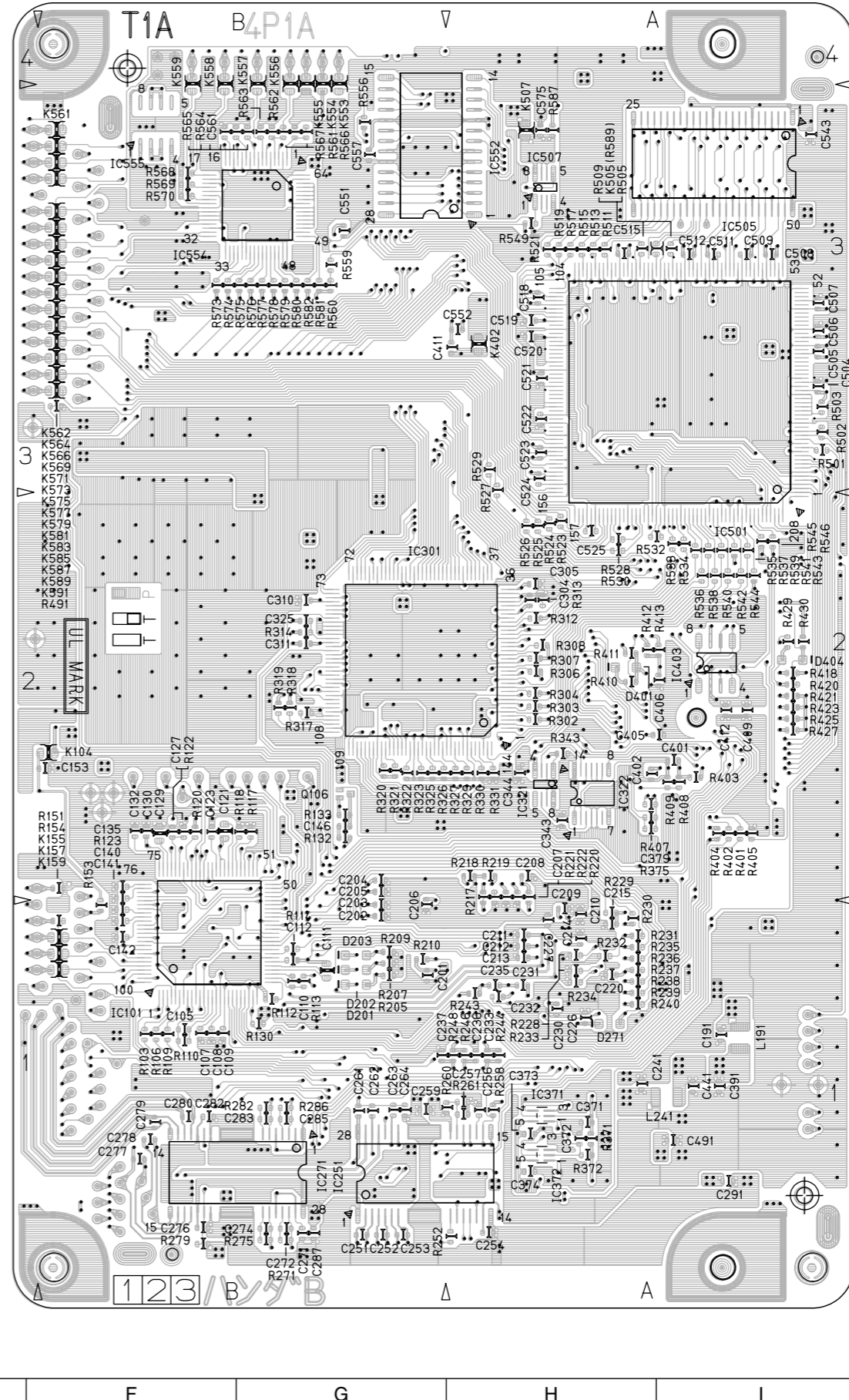
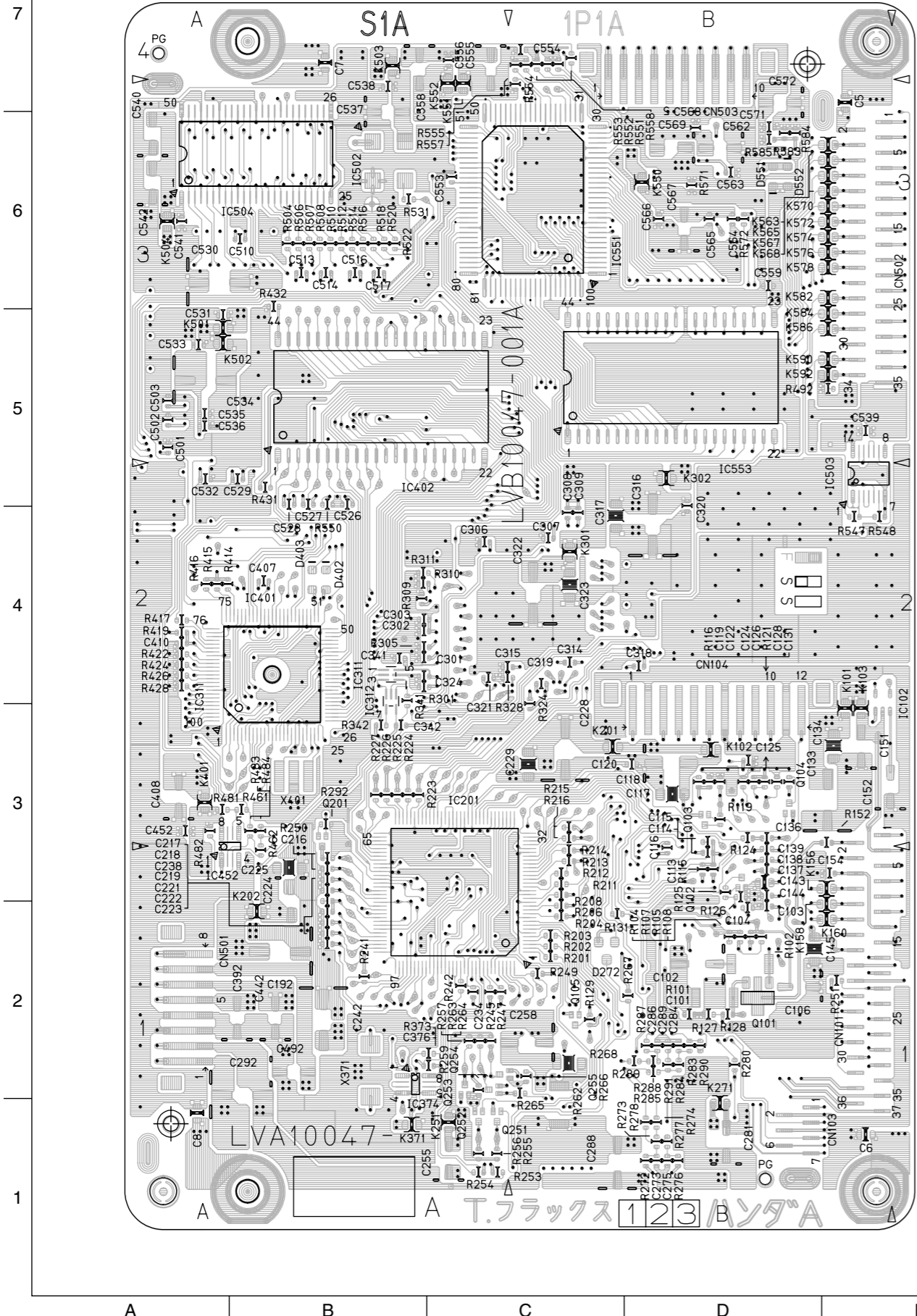
■ Audio/Video board



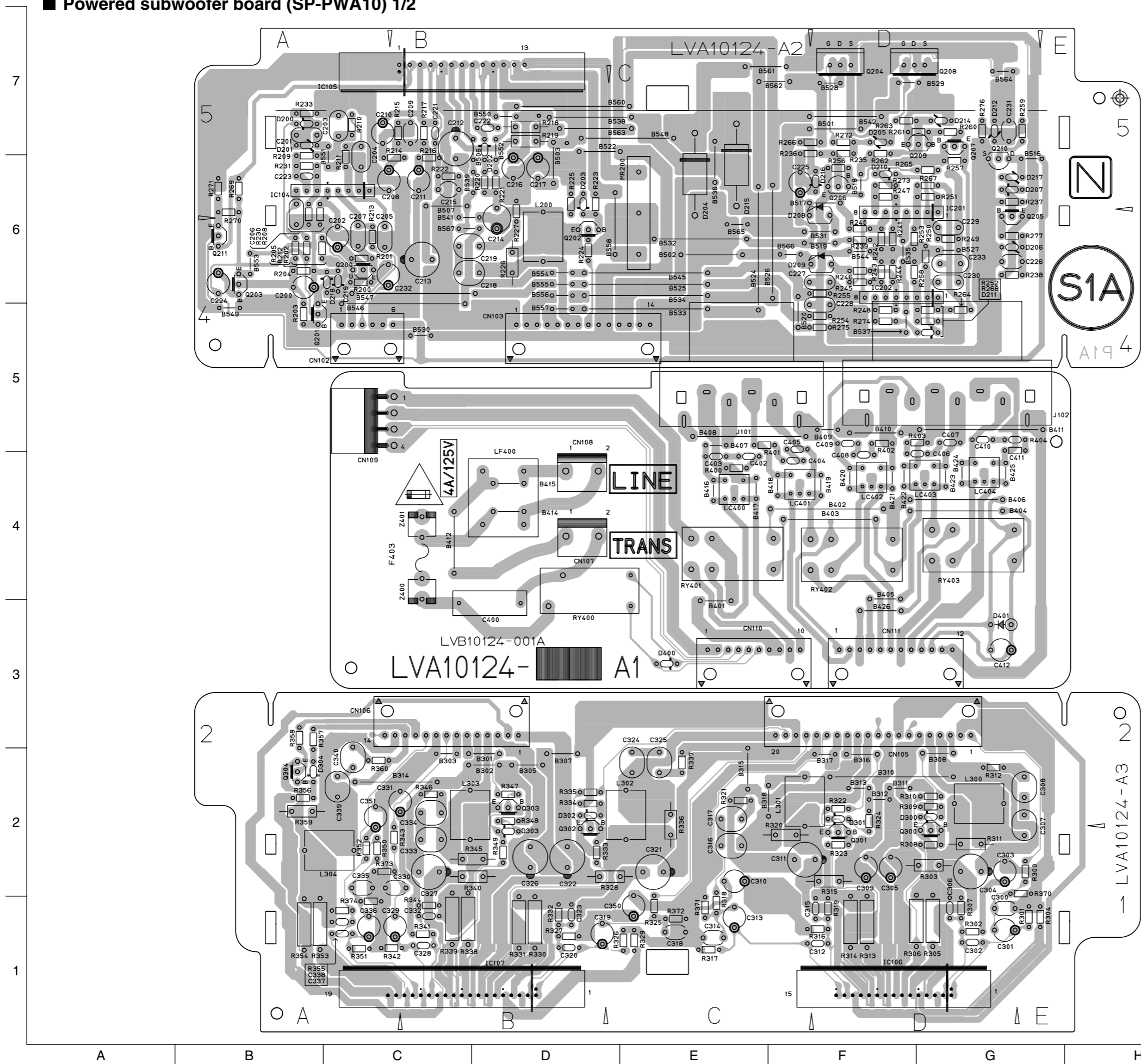
■ Main board

(Surface side view)

(Bottom side view)



■ Powered subwoofer board (SP-PWA10) 1/2



■ Powered subwoofer board (SP-PWA10) 2/2

